

Blacklegged (Deer) Tick (*Ixodes scapularis*)



female



male



nymph



larva

American Dog Tick (*Dermacentor variabilis*)



female



male



nymph



larva

Lonestar Tick (*Amblyomma americanum*)



female



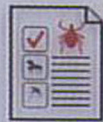
male



nymph



larva



TickReport
University of Massachusetts

Tick ID Tool

Different ticks pose different risks. To identify your tick, hold this card near the tick for comparison with the actual size images. We've circled the ticks associated with Lyme disease. If your tick is larger than these images, it may have fed for an extended time and hence poses greater risks. To test your tick for disease causing pathogens, visit www.TickReport.com

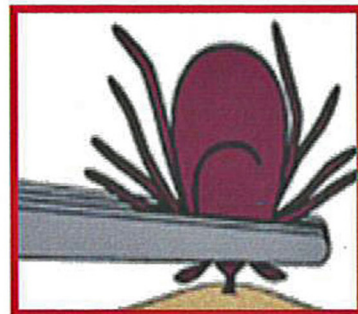
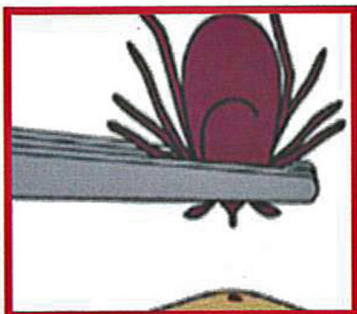


TickReport

Because a piece of data is peace of mind

HOW TO REMOVE A TICK

Grab the tick with fine tweezers (forceps) and pull with a steady upward motion.



After removal, clean the wound with antiseptic (alcohol or iodine).

WHY SHOULD I HAVE MY TICK TESTED?

Knowing which species bit you and if it was carrying any pathogens can help a physician treat you if signs of illness arise. TickReport™ is not a substitute for medical diagnosis, but it can help you and your physician assess your risk of exposure to Lyme and other diseases.

Our research laboratory makes test results available to the public. Anonymized information about where the tick was found and what pathogens it carried has great value to individuals and agencies tracking tick-borne diseases. To see the prevalence of Lyme and other pathogens in your zip code or state, visit our online Database (www.TickReport.com/stats).



www.TickReport.com

HOW TO SUBMIT A TICK FOR TESTING

Having your tick tested couldn't be easier. Just follow 5 simple steps:



Place the tick - dead or alive - in a sealable plastic bag.



Order your TickReport™ online at www.TickReport.com.



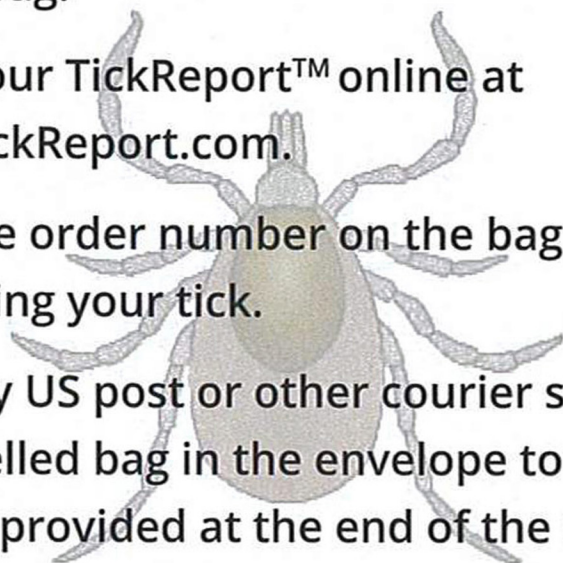
Write the order number on the bag containing your tick.



Send - by US post or other courier services - the labelled bag in the envelope to the address provided at the end of the order process.



Receive electronic results ≤ 3 business days after we receive the tick.



OUR SERVICES

- ✓ **Identification of tick species and life stage.** Not all tick species are associated with disease. Different tick life stages pose different threats.
- ✓ **Tests for presence of tick-borne pathogens.** Every tick-borne disease begins with infection of one of several pathogens (bacterial, parasitic or viral). We've developed highly accurate and sensitive tests to detect these pathogens in ticks. Infected ticks MAY transmit a variety of pathogens. Lyme disease is the most prevalent tick-borne disease in the U.S.

Visit www.TickReport.com for a complete list of pathogens we test.

- ✓ **Reports that are accurate and secure.** Access to your customized TickReport™ is provided through a secure URL link to our website.
- ✓ **Archival storage of tick samples.** Each tick extract is kept frozen so that clients may request additional testing at any time. This archive serves as a record of personal exposure and can be used to retrospectively look for pathogens that weren't tested.

www.TickReport.com