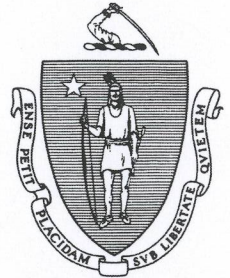

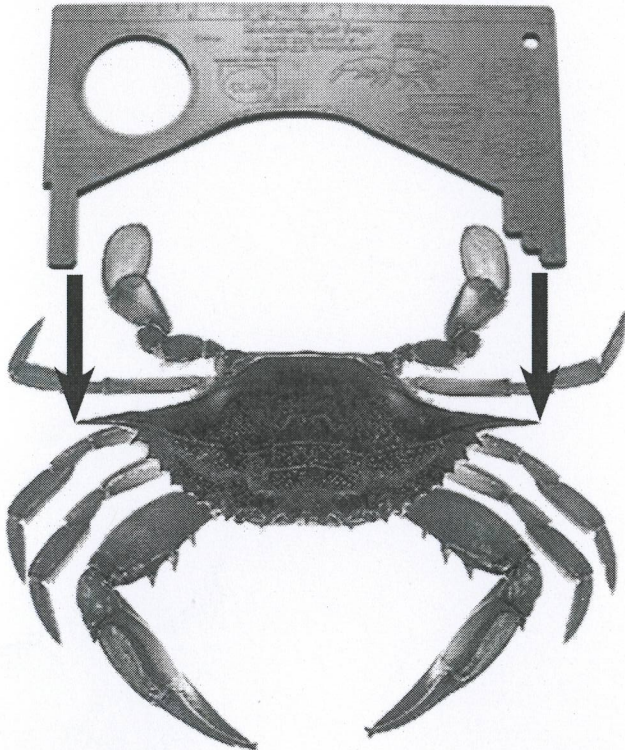






BLUE CRAB REGULATIONS





 **Minimum Legal Size = 5 inches carapace width—from point to point.**




 **Daily limit is 25 crabs per person.**


 **No permit is required if you are dip-netting or using a “star trap” or other open wire trap.**

 **Night-time fishing is allowed for anyone harvesting by hand, using a dip-net, or a collapsible open wire trap.**

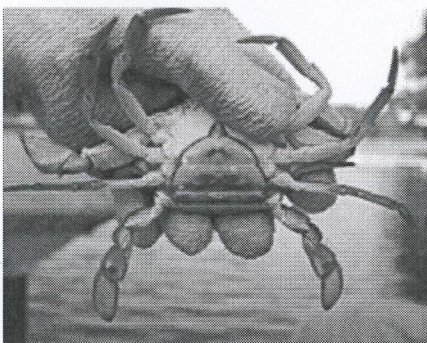
 **Recreational permit required if using 6-sided traps/pots.**

 **Contact MA Division of Marine Fisheries for Recreational Lobster/Crab Permit.**

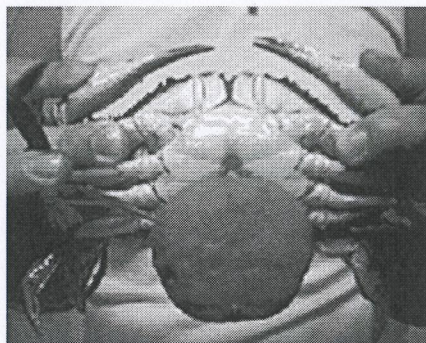
 **Closed Season: Jan. 1 – April 30.**

 **The taking of egg-bearing blue crabs is prohibited.**

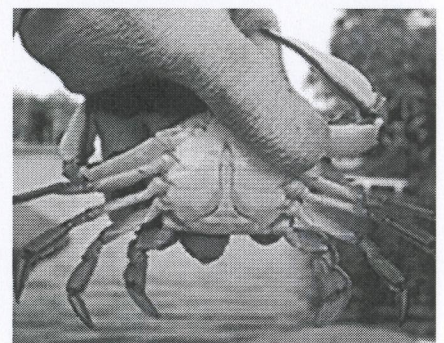
Photos by Steven C. Zinsky & Thomas H. Shafer



Mature Female



Egg-Bearing Female



Male

**Mass. Division of Marine Fisheries • 251 Causeway Street, Boston 02114
617-626-1520 • www.mass.gov/dfwele/dmf**

November 1, 2009